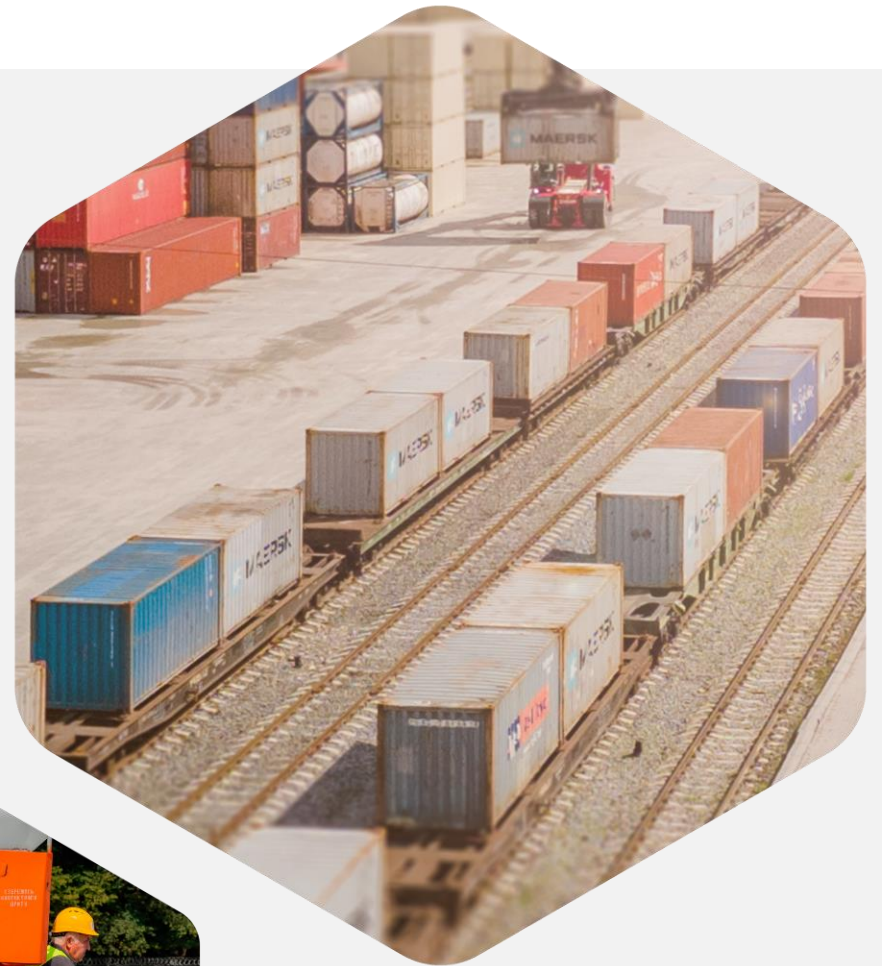




**Container  
Terminal  
Mostyska**

# **DRY PORT ON THE EU BORDER: NEW OPPORTUNITIES**



# ABOUT TERMINAL









# LOCATION ON THE EU BORDER



# ADVANTAGES

---

1

**Prime Location** – strategically positioned for efficient logistics

2

**5 Pairs of Railway Tracks** – optimized movement and rapid cargo handling

3

**Intermodality** – integrated solutions for transportation across multiple modes

4

**Pumping equipment** – effective handling of liquid cargo

5

**In-House Fleet of Locomotives** – 4 units: ensuring uninterrupted and independent operations

6

**Elevator** – modern facilities for grain transshipment

7

**Indoor warehouse** – reliable protection of cargo from weather conditions, with container stuffing capabilities

8

**Customs department** – convenient and fast on-site customs clearance

9

**Energy Independence** – generators ensuring stable operations under any conditions

10

**Round-the-clock operation** – a guarantee of efficiency and availability 24/7



# TRANSSHIPMENT SOLUTIONS 1520-1435



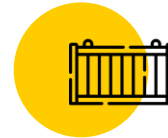
Railway track  
length  
**11 km**



**5 pairs**  
of railway tracks  
1435-1520 mm



Operational autonomy  
and efficiency



Possibility of  
overloading  
**5 pairs**  
of trains at the same  
time



Container  
Terminal  
Mostyska



# INTERMODAL CARGO TERMINAL

## Transshipment of cargo between all modes of transport:

- railway wagons
  - trucks
  - containers
- 
- railway platforms
  - railway tank wagons
  - tanker trucks



# SERVICES







# SERVICES

---

## CARGO OPERATIONS:

- Transshipment and storage of containers, including hazardous and temperature-controlled cargo
- Grain transshipment via the elevator, as well as direct transfer from trucks into wagons and containers
- Transshipment and storage of general cargo
- Transshipment and storage of bulk cargo
- Liquids transshipment: food-grade liquids, fertilizers

## CONTAINER STUFFING AND UNLOADING

## CONTRAILER (semi-trailer) TRANSSHIPMENT

# CONTAINER HANDLING



Warehouse capacity:

**3000 TEU**



## CONTAINER TYPES:

- DRY containers
- TANK containers
- REF containers
- Contrailer (semi-trailer)



## OPERATIONAL EQUIPMENT:

- 2 heavy reach stackers
- 2 light reach stackers
- 1 empty handler



## TRANSHIPMENT VOLUMES:

2023 y: **28 000 containers**

2024 y: **32 000 containers**



# GRAIN HANDLING

## ELEVATOR PARAMETERS:



Volume:

**4000**  
m<sup>3</sup>



Wagon loading:

**1500**  
tonnes per day



Vehicle unloading:

**200**  
tonnes per hour



On-site  
modern  
laboratory

## GRAIN HANDLING CAPABILITIES:

- Unloading: from wagons and trucks
- Transshipment: Into wagons, trucks, containers
- Direct transshipment: truck-container



# IN-DOOR WAREHOUSE



Warehouse area:  
**4032 m<sup>2</sup>**



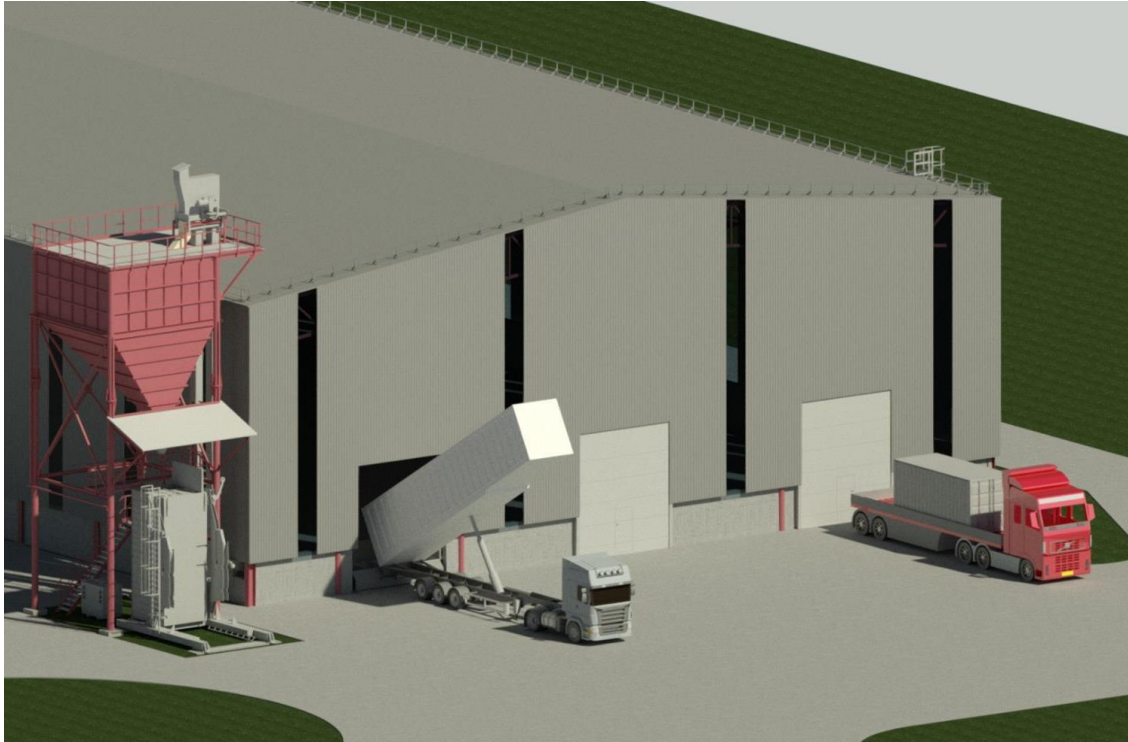
Storage capacity:  
**10,3 t**



Container stuffing



Annual transshipment  
Volume:  
**100 t**



## CARGO TYPES:

- Grains, meal
- General cargo



# LIQUID CARGO HANDLING



## TRANSSHIPMENT CAPABILITIES:

- Into railway tank wagons
- Into tanker trucks
- Into tank containers
- Into flexitanks (containers)

## CARGO TYPES:

- Food-grade cargo (oil)
- Fertilizers (CAS)

## INFRASTRUCTURE:



Liquid  
handling  
pumps:  
**9**



Capacity:  
**2000**  
tonnes per  
day



Simultaneous transshipment:  
**2 pairs**  
of trains

# GENERAL AND BULK CARGO HANDLING

---

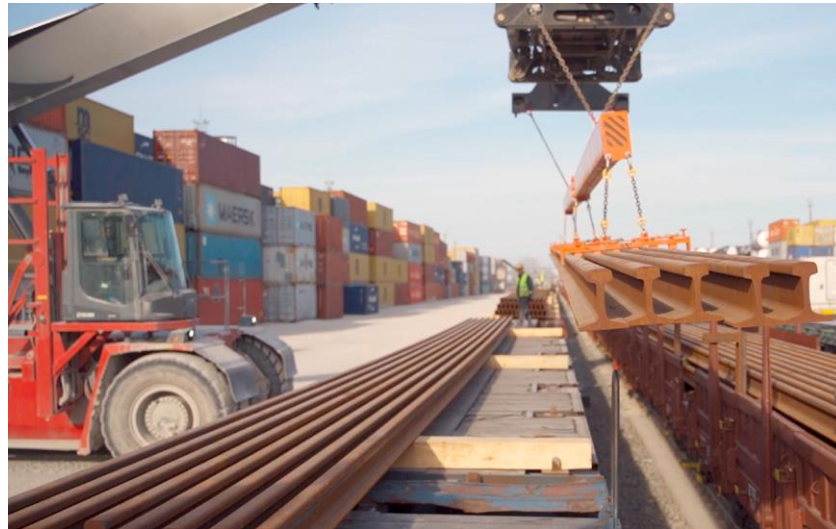
## GENERAL CARGO OPERATIONS:

### Cargo Types:

- Big-bags (bulk fertilizers)
- Metal products (coils, rails)
- Bulk cargo (crushed stone, coke, cast iron, etc.)

## INFRASTRUCTURE AND EQUIPMENT:

- A wide range of equipment for handling a wide spectrum of cargo
- Flexibility in processing cargo with varying specifications





# ADDITIONAL SERVICES



## AVAILABLE CUSTOMS CLEARANCE CAPABILITIES:

- Customs brokerage services
- Dedicated customs control zone
- Storage of containers and products under customs supervision
- Handling of phytosanitary and veterinary cargo

## CARGO CLEARANCE MODES:

- Import
- Export
- Transit

**OLEKSANDR  
SVETYUKHA**

+38 063 717 80 60

[o.svetyukha@ctm.in.ua](mailto:o.svetyukha@ctm.in.ua)

**[www.ctm.in.ua](http://www.ctm.in.ua)**



**Container  
Terminal  
Mostyska**